

CERTIFIED LAND CORNER RECORDATION

DESCRIPTION OF CORNER EVIDENCE FOUND, AND ORIGINAL RECORD (If known)

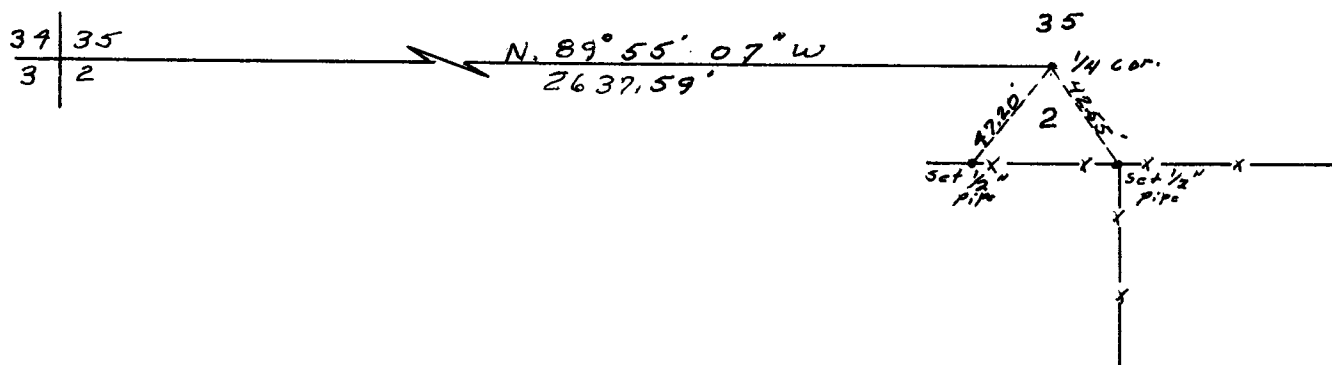
LOCATION 1/4 35 2 T.14N., R.63W. 6th P.M.	Found broken limestone 11" x 6" x 8" tipped over. Indentation believed to be the proper location for stone. G.L.O. record - limestone 16" x 8" x 4".
---	---

DESCRIPTION OF MONUMENT AND ACCESSORIES ESTABLISHED TO PERPETUATE THE ORIGINAL LOCATION OF THIS CORNER:

At the corner: Set 5/8" rebar with aluminum cap stamped $\frac{1}{2}$ $\frac{35}{2}$

Accessories: Set 5/2 ft. steel post 1 ft. east of corner.
See sketch for witness corners set.

SKETCH, WITH COURSE AND DISTANCE TO ADJACENT CORNER IF DETERMINED IN THIS SURVEY.
(May Sketch or Paste Reproduction on Reverse Side.)



I, Robert C. Corbet certify that I have carefully performed or reviewed the work done on the diagrammed corner as reported on this recordation form and approve the same.

Robert C. Corbet
Signature of Surveyor

L.S. No. 495
Registration No.

STATE OF WYOMING,
Office of Clerk and Recorder,
County of Taramie

This "corner record" was filed for record on the 9 day of August, 1973, was noted on the cross-index plat and is assigned page No. _____, in book No. _____.

John B. Husiman
County Official

Cross Index No. <u>219</u>	T. <u>14</u>	R. <u>63</u>	<u>6</u> Mer.
_____	T. _____	R. _____	Mer.
_____	T. _____	R. _____	Mer.
_____	T. _____	R. _____	Mer.
_____	T. _____	R. _____	Mer.
_____	T. _____	R. _____	Mer.
_____	T. _____	R. _____	Mer.

JB

Photographed

Indexed *RB*

Posted

Assessor

The State of Wyoming }
 County of Laramie } SS

This instrument was filed for record
 at 114 o'clock P. M. on the
9 day of August
1933 and duly recorded in
 Book _____ on Page _____

Henry B. [Signature]

& Ex-Officio Register of Deeds
 Deputy